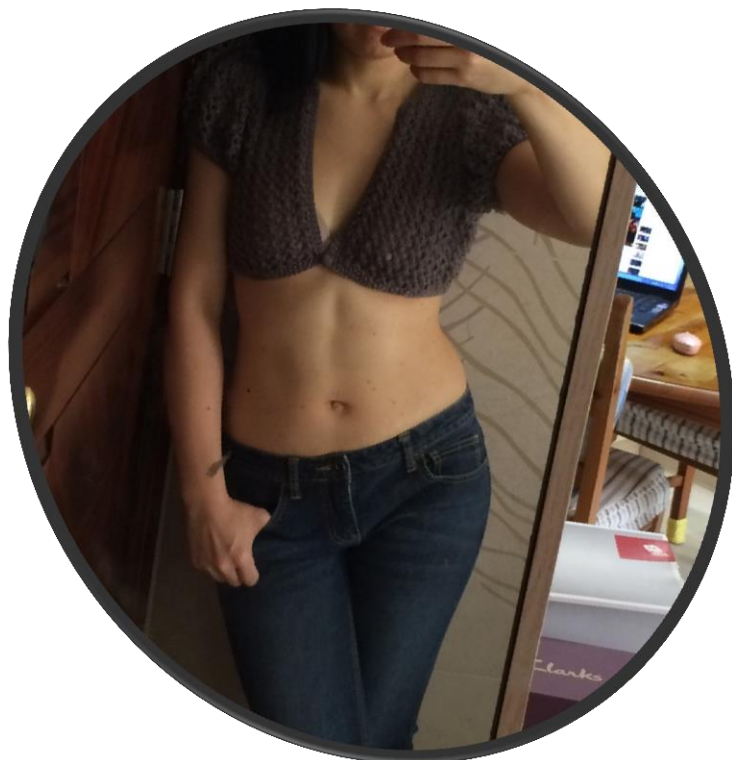


Regency Shrug (size UK 6-8)



Materials: 3 x 50gms of 4 ply yarn
1 button

Equipment: 4.5mm knitting needles
4mm crochet hook / Jap 7
/ US 6-6 / UK 8
embroidery needle

Abbreviations: k = knit
p = purl
yon = yarn on needle
tog = together
moss stitch = 1st row k1 p1
2nd row p1 k1
patt = work in pattern
rep = repeat
rs = right side
ws = wrong side

Tension: 2 inches: 10 sts to 9 rows in patt

Short puffed sleeves capped at the shoulders were characteristic of Regency era gowns. These graceful Empire dresses had high waists; and were gathered under the breasts and at the neckline. This shrug is designed to emulate these stylish gowns and can be worn over an Empire dress or as a modern day cropped top - as shown.



Pattern (patt):

Row 1: K1, *k3 yon, k3tog, yon; rep from * to last st, k1.

Row 2: Purl

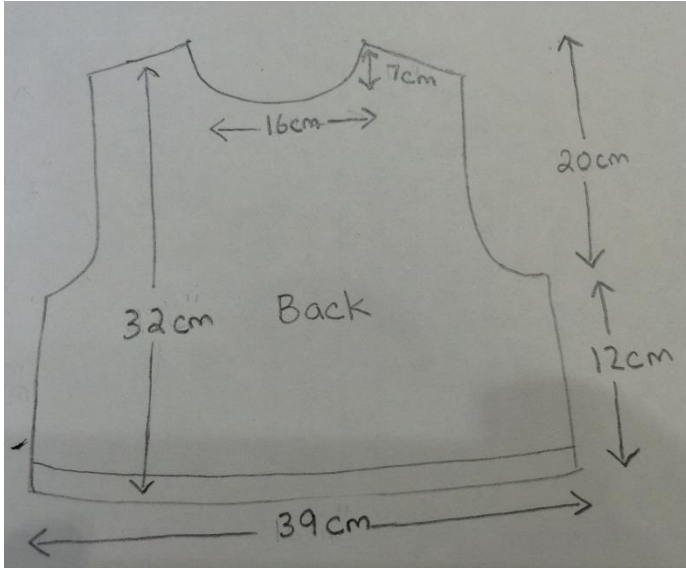
Row 3: K1, *yon, k3tog, yon, k3; rep from * to last st, k1.

Row 4: Purl

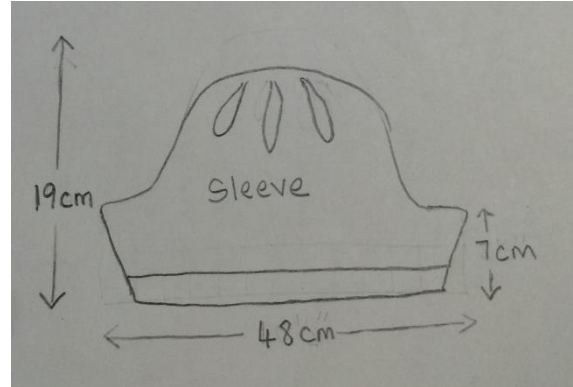
Designed by Serina Cheung
© <http://craftedfromstories.weebly.com/>

Garment Measurements:

1. Back



3. Sleeve



2. Front

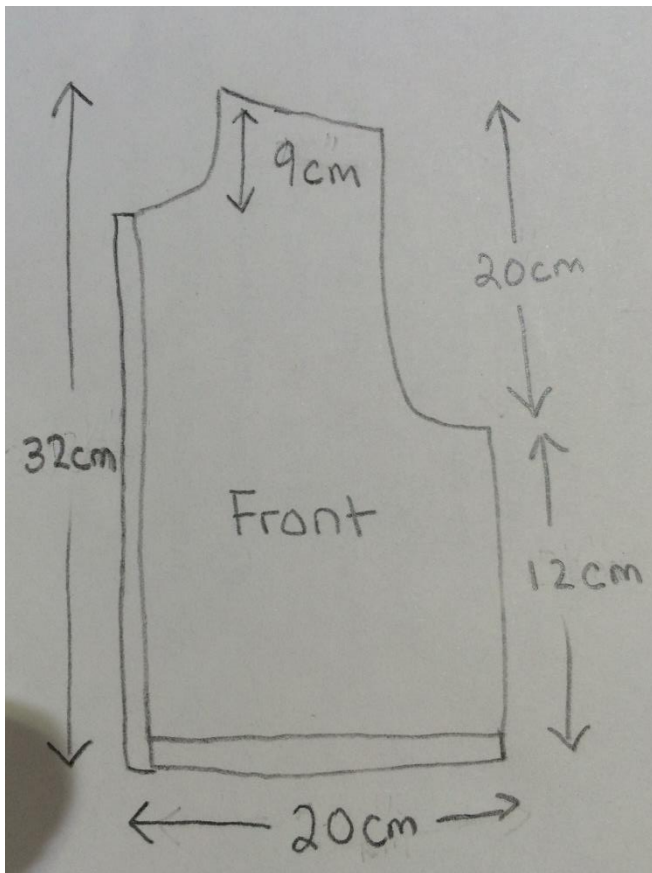


Fig: Regency Era Fashion

Back

Cast on 72sts.

4 rows of moss st.

Pattern (patt):

Row 1: K1, *k3 yon, k3tog, yon; rep from * to last st, k1.

Row 2: Purl

Row 3: K1, *yon, k3tog, yon, k3; rep from * to last st, k1.

Row 4: Purl

Rep pattern until work measures 4.5 inches ending with a purl row.

Shape Armhole

Keeping pattern correct, cast off 8 sts in the next 2 rows.

Dec at both ends in the next 5 rows.

Cont until armhole measures 6 inches finishing on a purl row.

Shape Shoulder

Cast off 5 sts, patt 12 (place these sts on a stitch holder).

Cast off for neck until 16 sts remain (incl st on right hand needle). Patt to the end.

Working on these 16 sts only.

Cast off 5 sts purlwise, purl to last 2 sts, p2tog.

Patt 1 row.

Rep last two rows 1 time.

Cast off remaining sts. Cut yarn.

Rejoin yarn to complete the other shoulder, p to end.

Cast off 5 sts knitwise, patt to last 2 sts, k2tog.

P to end.

Rep last two rows 1 more time.

Cast off remaining sts.

Left Front

Using 4.5mm knitting needles, cast on 32sts.

Work 4 rows in moss st.

Work in patt until the left front measures 4.5 inches ending on a purl row.

Shape Armhole

Keeping patt correct

Cast off 8 sts patt to end.

Dec 1 st at armhole edge in next 5 rows. [19 sts]

Cont in patt until work measures 8 inches finishing on a rs row.

Shape Neck

Keeping pattern correct

Cast off 4 sts at the neck edge and patt to end.

Cont without shaping until work measures the same as the back finishing with a p row.

Shape Shoulder

Cast off 5 sts knitwise and patt to end.

P to end.

Rep the last two rows 1 more time, then the first row 1 more time. Fasten off.

Right Front

Using 4.5mm knitting needles, cast on 32 sts.

Work 4 rows in moss st

Work patt until work measures 4.5 inches ending on a k row.

Shape Armhole

Cast off 8 sts purl to end.

Dec 1 st at armhole edge in the next 5 rows.

Cont without shaping until work measures 8 inches ending on a purl row.

Shape Neck

Cast off 4 sts at neck edge and patt to end.

Cont without shaping until work measures the same as the back.

Shape Shoulder

Cast off 5 sts at armhole edge and p to end

Patt for 1 row.

Rep 1 more time, then the first row 1 more time.

Fasten off.

Sleeves (make 2)

Cast on 52 sts.

Work 6 rows in moss st.

Row 7: Keeping moss st pattern, inc until 85 sts.

Working in patt, inc in every 2 rows until 93sts

Shape Armhole

Keeping patt correct

Cast off 8 sts in the next 2 rows.

Dec 1 st at each end of next 5 rows.

Work in patt until sleeve measures 4 inches.

Cast off 2 sts at beg of next 4 rows.

Cast off 5 sts at beg of next 4 rows

Cast off 3 in next 4 rows. [27 sts]

K3tog 9 times.

P3tog 3 times.

Cast off remaining 3sts.

Fasten off.

Sewing the Garment

Sew the shoulder seams of the left and right fronts to the back.

Sew the armhole seams of the sleeves to the garment, making sure you align the ruffled effect of the sleeves with the shoulder seam join of your garment.

Sew the sleeve seams.

Crocheting the border

Join yarn to the bottom right front.

Using crochet hook sc 35 along right front, sc 23 along right front neck edge, sc 25 along the back, sc 23 along left front neck edge, 35 along the left

front.

* Turn your work, sc 141 of the border. Rep from * one more time.

Making Buttonhole

Ch 6 and sl into the next sc in your work. (Now check that the button goes easily through the buttonhole loop. Add more or less chains depending on the size of your button.) Fasten off securely. Sew the button on the opposite side of your shrug.

Pressing the Garment

Place a thin cotton cloth over your garment and gently steam press your garment on the wrong side - making sure that you press the iron lightly to retain the raised effect of the lace pattern of your garment.

The garment is now ready for use. I hope you have enjoyed making this shrug as much as I have had designing it. Have a super day!



Fig 3: Neckline



Fig 1: Front View of the Garment



Fig 4: Sleeve



Fig 2: Button and Buttonhole



Fig 5: Finished Garment