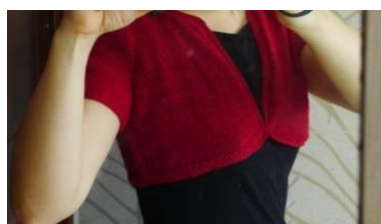
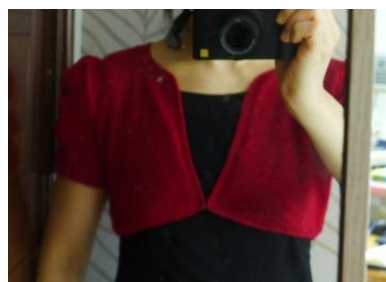


Jane Austen Shrug (UK Size 8)



Materials:

- 3 balls of Patons Lace Sequin 70 gm or other lace yarn
- 1 hook and eye closure
- sewing thread

Equipment:

- Knitting Needles Jap 7 / UK 7 or 8 / US 7 or 8 / metric 4mm/4.5mm
- Crochet hook Jap 6 / UK 9 US F5 / metric 3.75mm
- Embroidery needle
- Sewing needle

Abbreviations

Knitting:

k = knit
 p = purl
 rib = k2 p2
 ss = stocking stitch
 moss st = row 1: k1 p1
 row 2: p1 k1
 dec = k2 tog / p2 tog
 inc = k1 p1 into the same st / p1 k1 into the same st
 st(s) = stitch (es)
 tog = together
 rep = repeat
 cont = continue
 beg = beginning

Crochet: ch(s) = chain(s)
 sc = single crochet

General: rs = right side
 ws = wrong side

Gauge: 2 inch square over ss
 12 sts and 16 rows

Designed by Serina Cheung

@ <http://craftedfromstories.weebly.com/>

Measurements of the Jane Austen Shrug

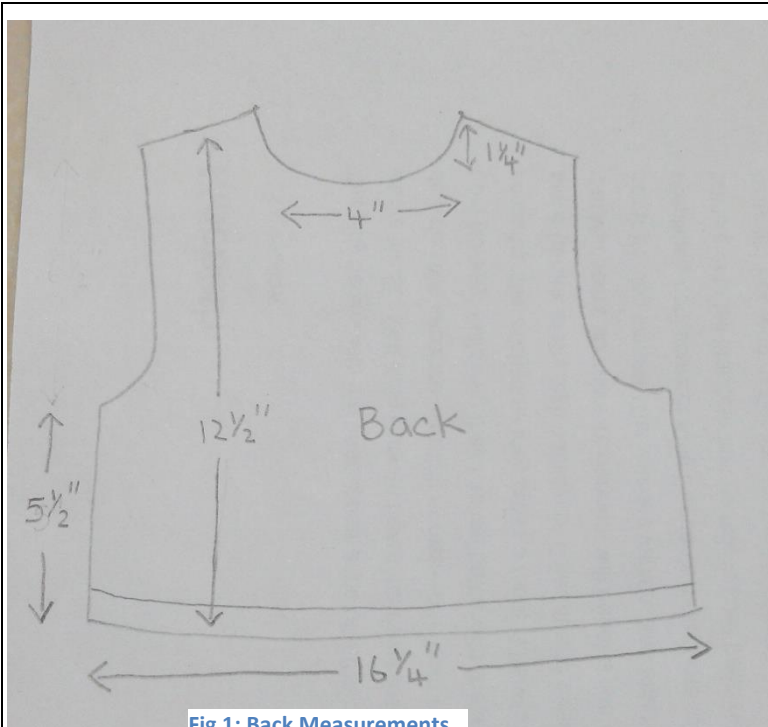


Fig 1: Back Measurements

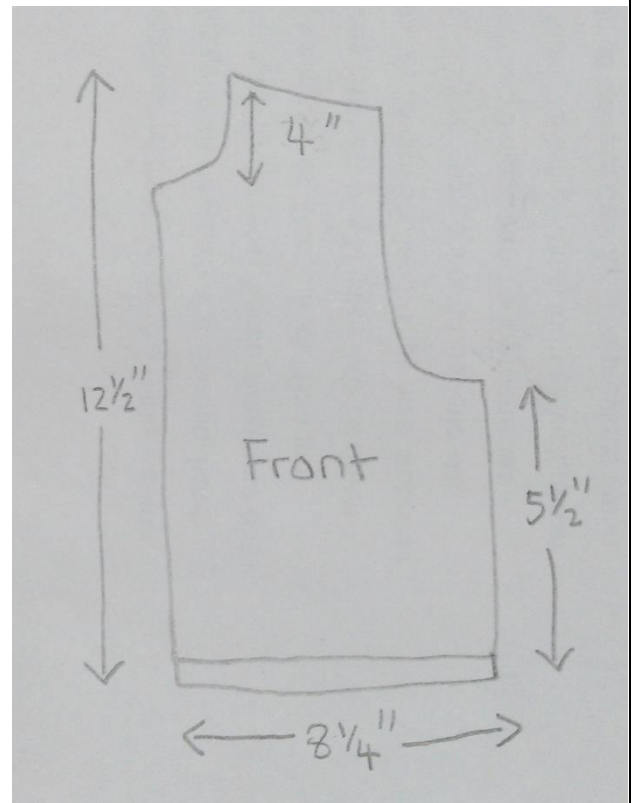


Fig 2: Front Piece Measurements

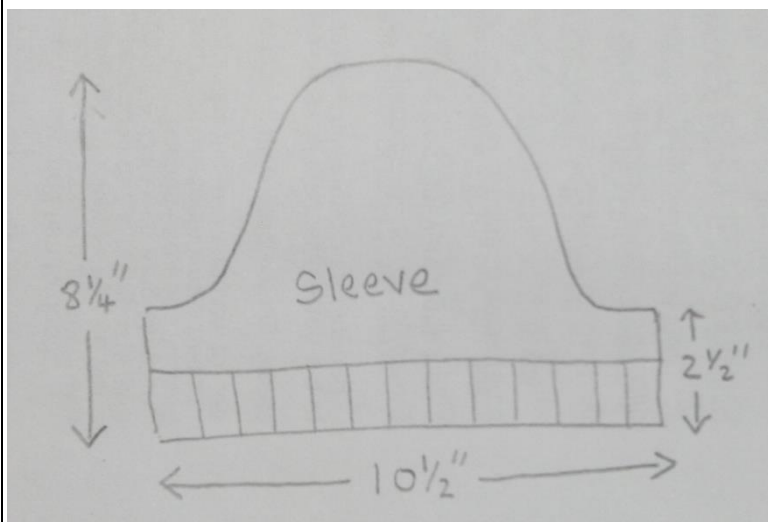


Fig 3: Sleeve Measurements

Measurements of the Jane Austen Shrug:

Back: W: $16\frac{1}{4}$ inches (41cm)
 L: $12\frac{1}{2}$ inches (32cm)
 Armhole: 7 inches (18cm)
 Sides: $5\frac{1}{2}$ inches (14cm)
 Neck: W: 4 inches (10.5cm)
 L: $1\frac{1}{4}$ inches (3cm)

Front: W: $8\frac{1}{4}$ inches (21cm)
 L: $12\frac{1}{2}$ inches (32cm)
 Armhole: 7 inches (18cm)
 Sides: $5\frac{1}{2}$ inches (14cm)
 Neck opening: 4 inches (10.5cm)

Sleeve: W: $10\frac{1}{2}$ inches (27cm)
 L: $8\frac{1}{4}$ inches (21cm)
 Sides: $2\frac{1}{2}$ inches (6.5cm)

Back

Using 4mm knitting needles cast on 96 sts.
4 rows of moss st for border.
ss until work measures 5.5 inches (14 cm) ending on p row.

Shape Armhole

Cast off 8 sts in next 2 rows. [80sts]
Row 1: k2tog, k to last 2 sts, k2tog
Row 2: P2tog, p to last 2 sts, p2tog
Rep last 2 rows two more time. [68sts]
ss until armhole measures 6.5 inches (17cm) ending on a p row.

Shape Neck and Shoulders

Cast off 5 sts, k16, K2tog turn [18 sts]
(Place the rest of the sts on a stitch holder).
Working on these 18 sts,
P2tog, p to end. [17 sts]
*Cast off 5 sts, K to last 2 sts, K2tog. [11 sts]
P2tog, p to end. [10 sts]
Rep last two rows from * until 3 sts remain.
Cast off and cut yarn.
With rs of work facing, rejoin yarn to neck and cast off 20 sts knitwise, k to the end [24 sts].
**Cast off 5 sts, P to last two sts, P2tog.
[18 sts]
K2tog, K to end. [17 sts]
Rep last 2 rows from ** until 3 sts remain.
Cast off and cut yarn.

Right Front

Using 4mm knitting needles, cast on 44 sts.
4 rows of moss st.
Cont in ss until right front measures 5.5 inches (14cm) ending on a k row.

Shape Armhole

Cast off 8sts purlwise, p to end. [36 sts]
*K to last 2 sts, k2tog. [35 sts]
P2tog, p to end. [34 sts]
Rep last 2 rows from * 1 more time.
K to last 2 sts, K2tog. [31 sts].
ss until armhole measures 3.5 inches [9cm] ending on a p row.

Shape Neck & Shoulders

Cast off 8 sts knitwise, k to end. [23 sts]
P 1 row.
Cast off 3 sts knitwise, k to end. [20 sts]
P 1 row.

**Cast off 1 st knitwise, k to end [19 sts]
P 1 row.
Rep last 2 rows from ** 1 more time. [18 sts]
Cont in ss without shaping until armhole edge measures 6.5 inches [17 cm] ending on a k row.
***Cast off 5 sts at armhole edge, k to end.
P 1 row.
Rep last two rows from *** 2 more times.
Cast off remaining 3 sts. Cut yarn.

Left Front

Using 4mm knitting needles, cast on 44 sts.
4 rows of moss st.
Ss until left front measures 5.5 inches (14cm) ending on a p row.

Shape Armhole

Cast off 8sts knitwise, k to end. [36 sts]
*P2tog, p to end. [35 sts]
K to last 2 sts, k2tog. [34 sts]
Rep last 2 rows from * 1 more time.
P2tog, p to end. [31 sts].
Cont in ss until armhole measures 3.5 inches [9cm] ending on a k row.

Shape Neck & Shoulders

Cast off 8 sts purlwise, p to end. [23 sts]
K 1 row.
Cast off 3 sts purlwise, p to end. [20 sts]
K 1 row.
**Cast off 1 st purlwise, p to end [19 sts]
K 1 row.
Rep last 2 rows from ** 1 more time. [18 sts]
Cont in ss without shaping until armhole edge measures 6.5 inches [17 cm] ending on a p row.
***Cast off 5 sts at armhole edge, p to end.
K 1 row.
Rep last two rows from *** 2 more times.
Cast off remaining 3 sts. Cut yarn.

Sleeves (make 2)

Using 4mm knitting needles, cast on 56 sts.
(K2 P2) rib for 8 rows.
Row 9: Inc in every 4 sts. [69 sts]
Work in ss until sleeve measures 2.5 inches (7cm).

Shape Armhole

Cast off 8 sts in next two rows. [53 sts]
Dec at both ends in the next two rows. [43 sts]
Work 22 rows in ss.
*K2tog, k to last 2 sts, k2tog.

P 1 row.

Rep last two rows from * 2 more times. [37 sts]

Cast off 6 sts in the beg of next 2 rows. [25 sts]

**Cast off 3 sts in the beg of next 2 rows. [19 sts]

Rep last row from ** until 7 sts remain.

Cast off and cut yarn.

Pressing & Sewing

Press all the pieces of the garment under a cotton cloth with a warm steam iron. Use backstitch to sew your garment.

1. Attach and sew the shoulder seam of left front to the back.
2. Attach and sew shoulder seam of right front to the back.
3. Attach sleeves to the armholes of the garment, creating an even numbers of gathers on the top of each sleeve for a puffed look.
4. Sew the side seams and sleeve seams.
5. Lightly press the garment.

Crochet Border

Using 3.75mm crochet hook and rs of work facing, starting from the bottom of the right front,

Row 1: sc 44 along the right front edge,
 sc 30 along the right front neck edge,
 sc 40 along the back edge,
 sc 30 along the left front neck edge,
 sc 44 along the left front edge. [188 chs].

Turn your work.

Row 2: With ws facing,
 sc 44 along the left front edge
 sc 2 times in next sc, sc 29 along left front neck edge,
 sc 40 along the back edge,
 sc 29 along right front edge, sc 2 times in next sc,
 sc 44 along the right front edge. [190 chs]
 Turn your work.

Rnd 3: The crochet border from this time onwards will include the bottom borders of the garment also. With rs facing and now working in rounds,
 sc 44 along the right front edge,
 sc 2 times into next sc, sc 30
 sc 40 along the back edge,
 sc 30 along the left front neck edge, sc 2 times into the next sc
 sc 44 along the left front edge,

sc 44 along the left front bottom,
 sc 94 along the back bottom,
 sc 44 along the right front bottom.

Rnd 4: sc 2 times into the next st, sc 43 along the right front edge,
 sc 2 times into next sc, sc 31 along the right front neck edge.
 sc 40 along the back edge,
 sc 31 along the left front neck edge, sc 2 into next sc.
 sc 43 along the left front edge, sc 2 times into next sc,
 sc 44 along the left front bottom,
 sc 94 along the back bottom,
 sc 44 along the right front bottom.

Rnd 5: sc 2 times into next sc, sc 44 along the right front edge,
 sc 2 times into next sc, sc 32 along the right neck edge,
 sc 40 along the back edge,
 sc 32 along the left front neck edge, sc 2 times into the next sc,
 sc 44 along the left front edge, sc 2 times into the next sc,
 sc 1, fasten off.

Making up your garment

Weave in all loose ends.

Press the borders of the garment under a cotton cloth with a warm steam iron.

Attach the hook and eye to the bottom left hand and right hand front edges. The garment is now completed. Happy knitting!



Fig 4: A Serina Cheung Design / Jane Austen Shrug